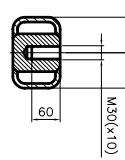


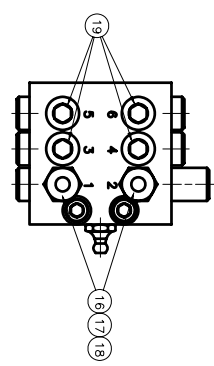
**LEGENDA**

RIF. Q.TA	DESCRIZIONE	ITEMS
1	CUTTING TABLE WELD DRWN W KNIFE WR2000	00157262
2	SHAFT ASS DRWN CUTTING TABLE WR V9/80HP	00157220
3	THRUST COLLAR BALL BEARING	60018100
4	CONNECTION FLANGE CUTTING TABLE WR1500	00158553
5	SHAFT TORQUE FLANGE CUTTING TABLE WR1500	00158552
6	SELFLOCKING HEXAGON NUT	60003540
7	WASHER	60013751
8	BEARING LINK	60010985
9	SCREW HEXAGON SOCKET	60013750
10	WASHER HARDEN	60001898
11	HEXAGON HEAD SCREW	60003982
12	WASHER FACET	60001291
13	PUMP FOR GREASE	60019986
14	GREASE	60015422
16	NON RETURN VALVE	60008293
17	PROFILE RING	60008297
18	NUT FOR PROFILE RING FITTOS	60008295
19	PLUG	60008299
20	LUBRICATING HOSE CUTTING TABLE WR 20	00156493
21	LUBRICATING HOSE CUTTING TABLE WR 20	00156494
22	CLAMP DOUBLE	60012393
23	COVER PLATE FOR CLAMP	60012394
24	SCREW HEXAGON SOCKET M06X25	60001266

DETAIL E  
1:3



SECTION D-D  
1:1



SECTION C-C  
1:3

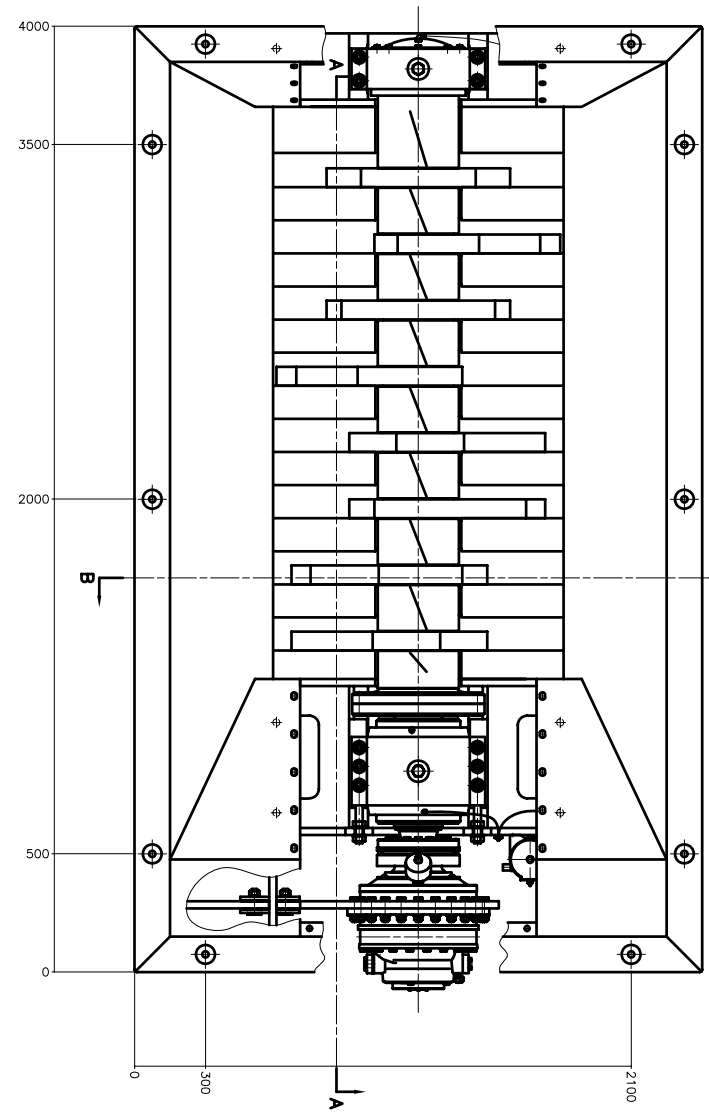
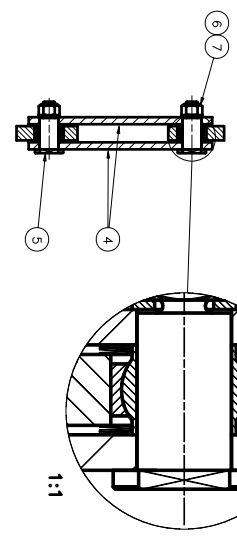


TAVOLA DI TAGLIO

- NOTE:
- ▷ TILSPÄNDNINGSMÖMENT:  
TIGHTENING TORQUE :  
① M30 : 2100 Nm
  - ② M30x1.5 : 700 Nm
  - ▷ DKRPLÅDER IKKE VIST PÅ TOPBILLEDE  
COVER PLATE NOT SHOWN AT TOP VIEW
  - ▷ BEHOLDER RENGØRES FOR FEDT FØR  
NYT FEDT PÅFYLDES  
CLEAN CONTAINER, REMOVING ALL GREASE  
BEFORE NEW GREASE IS ADDED
  - ▷ VÆGT : 11.400 kg  
WEIGHT : 11.400 kg

	M&S S.p.A. VIA S. GIUSEPPE, 11 20010, CAPUA VETERE	PIANO 1:10 2020.06.11
	CUTTING TABLE ASS DRWG WR 2000 S 8/80 HP S.M. CAPUA VETERE	15 85 68A